

WUB WEC Winch Unit Type B

This winch unit is designed and fully tested for use exclusively with the following WEC products and equipment:-

WD4 WD6

Tilt over lattice work towers.

TP4S TP5S TP6S

Demountable Columns.

TP4T TP5T TP6T

Demountable Columns.

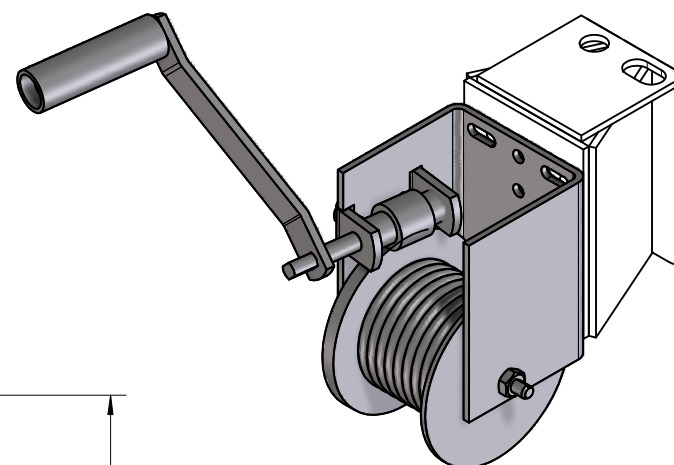
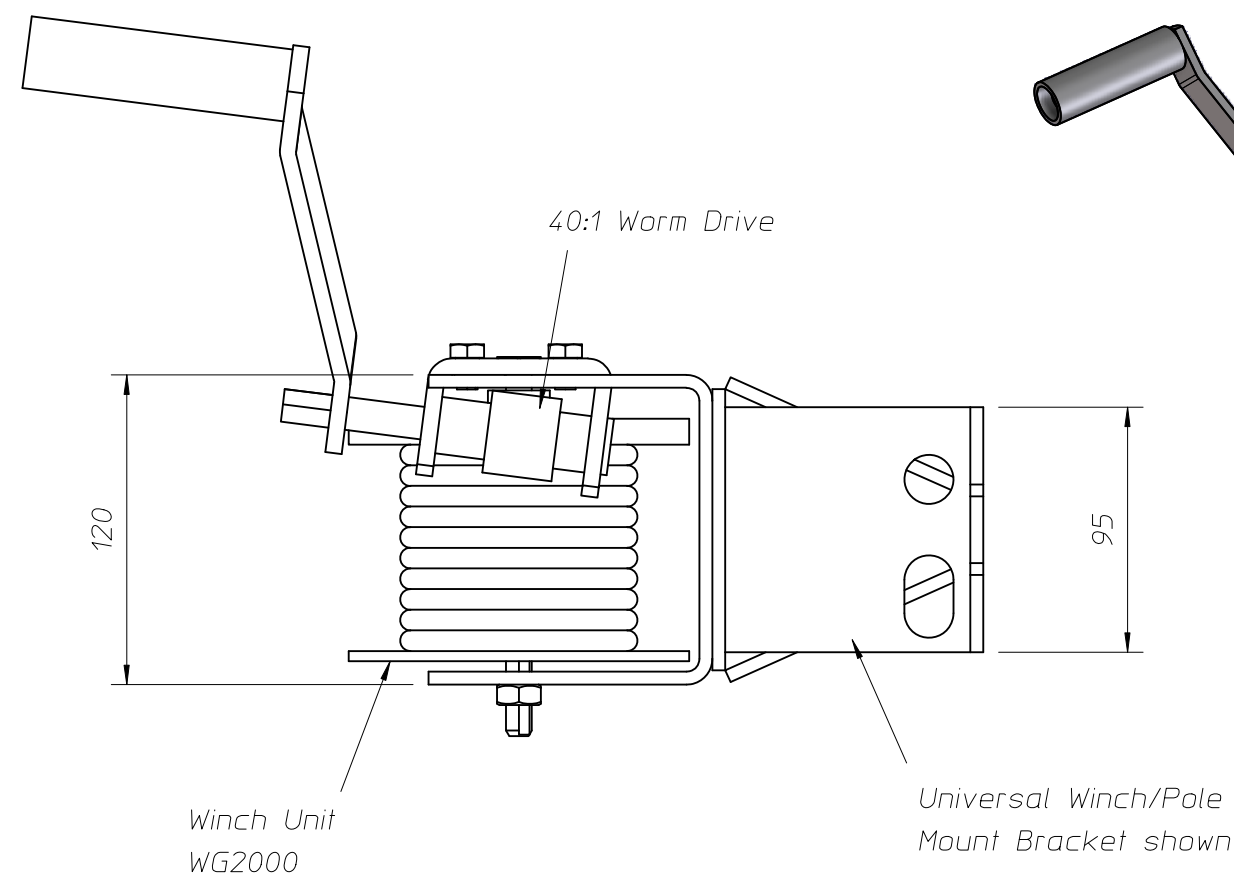
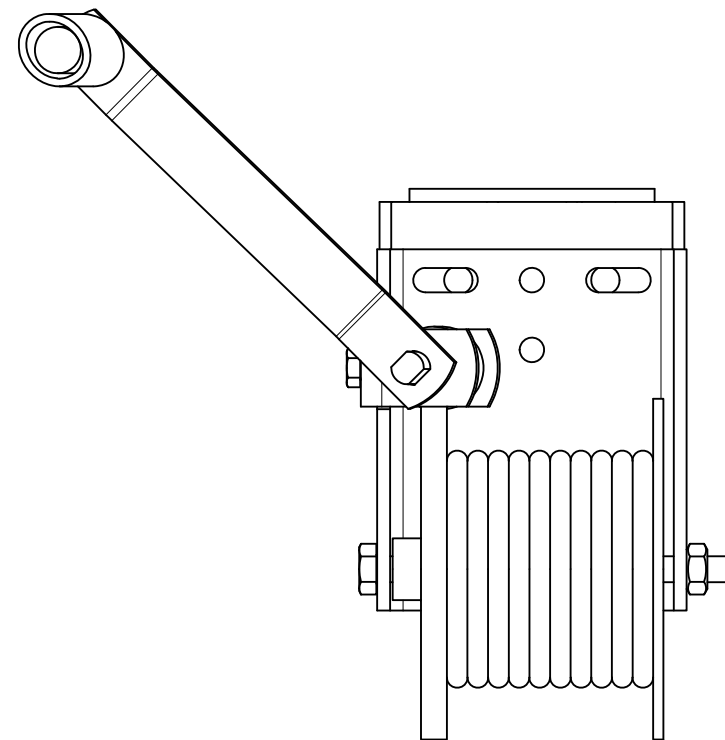
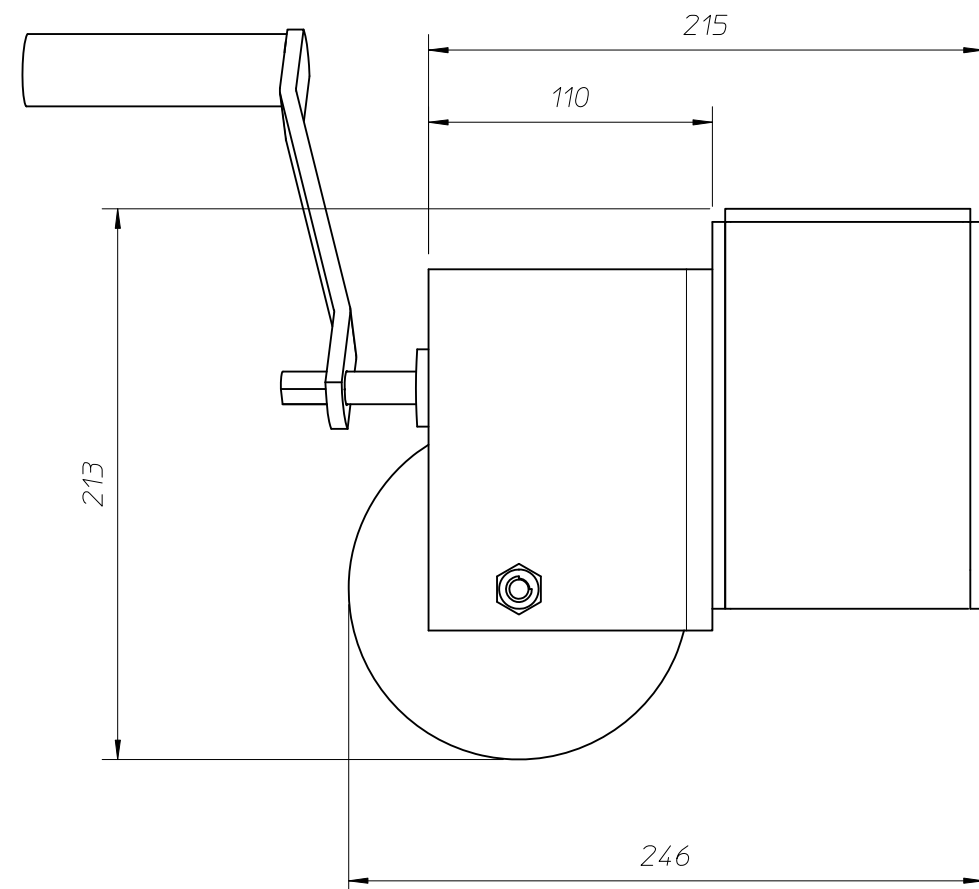
DO NOT USE ON ANY OTHER PRODUCTS THAN THOSE STATED.

It is imperative that all operators are fully conversant with the operation and procedures of the product that the winch is to be used upon.

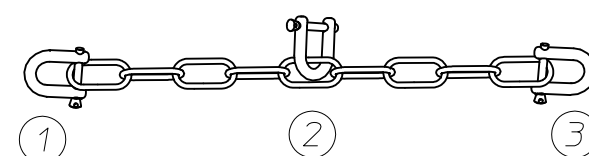
WEC recommends Winch Training and offers suitable courses for operators

Maintenance

- 1 - Inspect the winch cable for signs of damage or deterioration with every operation.*
- 2 - Grease the main gear wheel on a regular basis.*

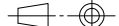



3D Perspective



SAFETY CHAIN NOTE

*When using on lattice towers use full length of chain (1 - 3)
When using on columns use half length of chain (1 - 2)*

1ST ANGLE PROJ'N 		UNITS:- mm	CUSTOMER		JOB / ORDER NUMBER	
DIMENSION TOL'CE		ANGLE TOL'CE	MATERIAL		TREATMENT OR FINISH	
GENERAL SURFACE FINISH 		SCALE 1:3	ASSEMBLY No.		No. OFF PER ASSY.	PART No.
DESCRIPTION WUB Winch Unit Type B Light Duty Hand Winch			DRAWING No. WEC-008-0648-1			<div>A3</div>
DRAWN <i>David Kay</i>		CHECKED	DATE 29th May 09		SUPERSEDES	
WELDING ENGINEERING LTD, BRITANNIA HOUSE, JUNCTION STREET, DARWEN, LANCASHIRE BB3 2RB. TEL: (01254) 773718 FAX: (01254) 873637						
ALL RIGHTS STRICTLY RESERVED. REPRODUCTION OR ISSUE TO THIRD PARTIES IN ANY FORM WHATEVER IS NOT PERMITTED WITHOUT WRITTEN AUTHORITY FROM THE PROPRIETORS.						